
VORTEX[®]

PANEL SOLUTIONS

HOME
SOLUTIONS



ABOUT US

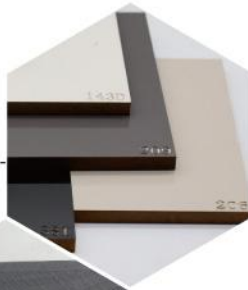
We are a company specializing in the import of Vortex brand MDF panels from Germany. We are committed to providing interior design professionals and kitchen designers with high quality materials, combining robustness, precision, and aesthetics. Our expertise and local customer service make us a trusted partner for all your design projects.



CONTENT

HIGH GLOSSY UV SERIES

05



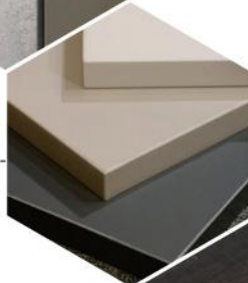
SUPER MATT UV SERIES

12



PETG MDF BOARD

18



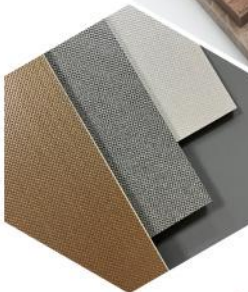
SYNCHRONIED BOARD SERIES

23



3D DEEP TEXTURE BOARD

31



POWDER COATED MDF

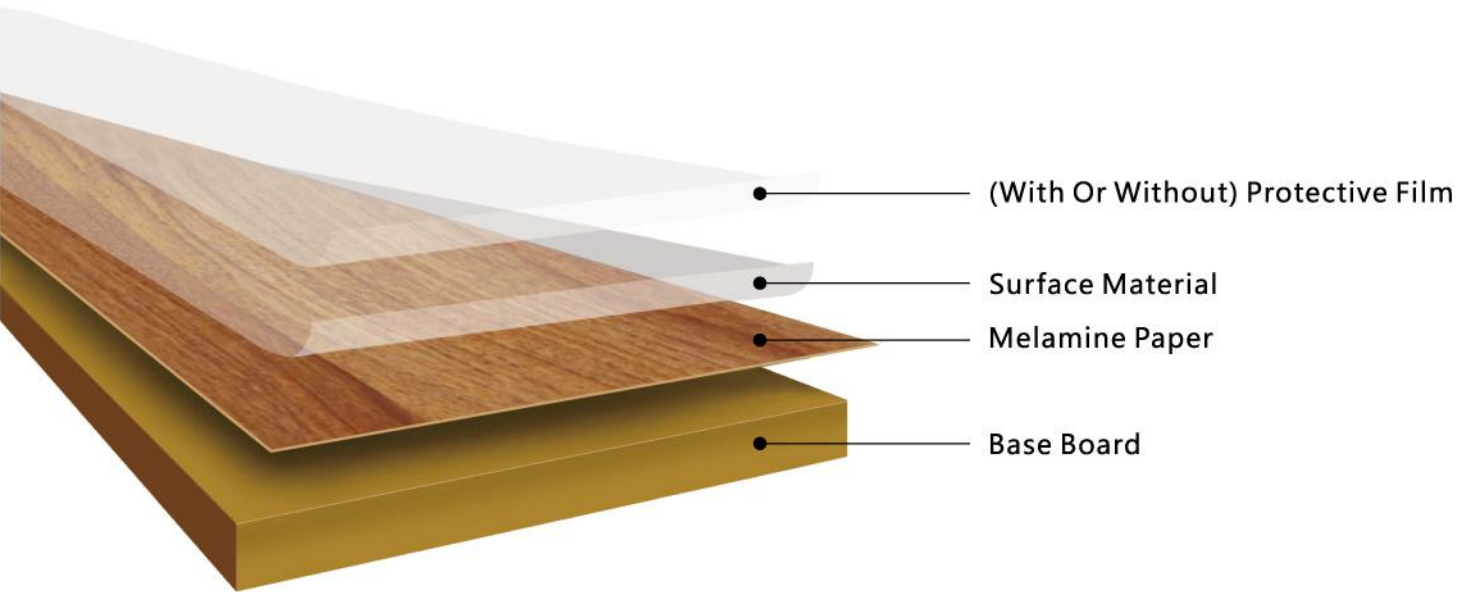
33



EDGE BANDING

37





CORE/BASE BOARD OPTIONS :

- . Medium Density Fiberboard (MDF)
- . Plywood
- . Particleboard
- . High Moisture Resistant MDF (HMR MDF)
- . Fire Retardant MDF (FR MDF)
- . High Density Fiberboard (HDF)





HIGH GLOSSY

UV BOARD

SPECIFICATION

Surface

Mirror Glossy UV Coating

Standard Size

1220x2440x18mm 48"x96"x3/4"

1220x2800x18mm 48"x110"x3/4"

Base Material

MDF, Chipboard, Plywood

Thickness

8,9,12,15,16,17,18mm, etc.

Standard Formaldehyde Emission Classification

Normal, E1, CARB P2-TSCA EPA

Color

Solid Color, Diamond Design, Wood design, Marble design

Application

Commercial Furniture, Home Furniture
Kitchen Cabinets, Drawers, Decorative Board, etc.

Our high glossy UV board is luxury and advanced product, it is with 8-12 times UV painting by Europe Imported production line, which makes the surface with good quality, glossy like mirror, High scratch resistance.

CHARACTERISTICS



High Scratch
Resistance



Mirror High Gloss



Long Durability



Mirror Reflection



SOLID COLOR

1.1 HIGH GLOSSY UV BOARD SOLID COLOR SERIES



AM007-WARMWHITE



AM088-BEIGE



AM019-CREAM



AM065-STORM GREY



AM204-KHAKI



AM209-GREY



AM825-CYEAN



AM010-RED



AM215-CAPPUCCINO



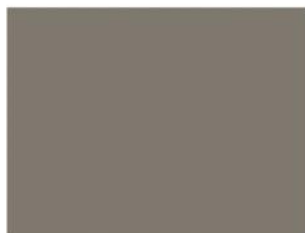
AM381-DARK GREY



AM852-GREY GREEN



AM035-REDWINE



AM668-ESPRESSO



AM006-PURE BLACK



AM866-INDIGO BLUE



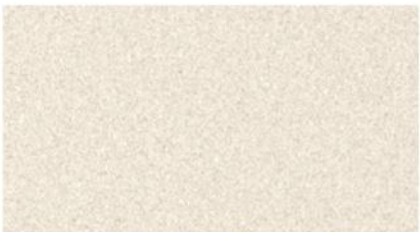
AM867-NAVY BLUE

COLOUR RANGE

1.2 HIGH GLOSSY UV BOARD DIAMOND COLOR SERIES



AM040D



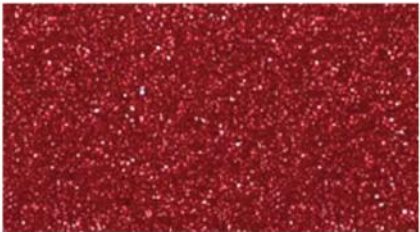
AM143D



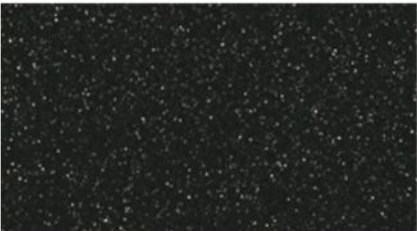
AM040D



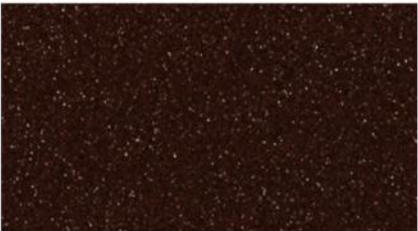
AM133D



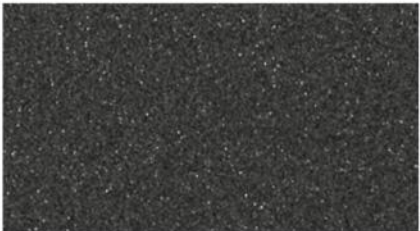
AM216D



AM307D



AM526D



AM109D

COLOUR RANGE

1.3 HIGH GLOSSY UV BOARD WOODGRAIN COLOR SERIES



AM160



AM920



AM157



AM159



AM198



AM319



AM625



AM690



AM692

COLOUR RANGE

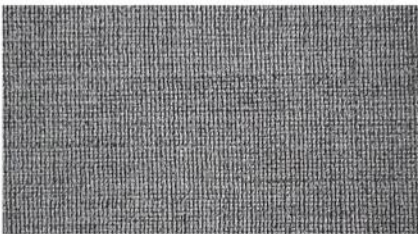
1.4 HIGH GLOSSY UV BOARD WOODGRAIN COLOR SERIES



AM532



AM639



AM734



AM1078



AM733



AM487



AM488

COLOUR RANGE

1.5 HIGH GLOSSY UV BOARD MARBLE DESIGN SERIES



AM679



AM760



AM782



AM781



AM759



COLOUR RANGE

1.6 HIGH GLOSSY UV BOARD MARBLE DESIGN SERIES

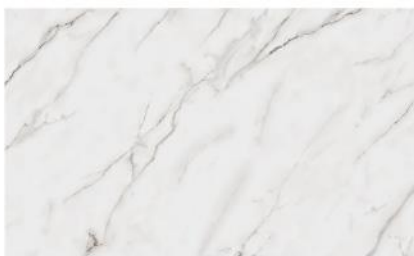
VORTEX
PANEL SOLUTIONS



AM1183



AM1137



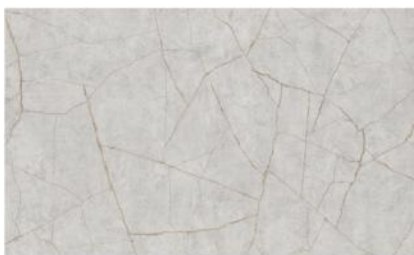
AM1015 **NEW**



AM1191



AM962



AM1114



AM732



AM999



AM1090



AM967

SERIES

2

SUPER MATT UV BOARD

ADVANTAGES:

- Astonishing warm, Soft touch like silk feeling.
- Pleasant and natural feeling
- Being simultaneously highly resistance to scratch and abrasion
- Maintain Highest resistance to various chemical products and substances
- Color stability and light fastness assure long time usage

SPECIFICATION

Surface

Soft Touch Super Matt UV

Standard Size

1220x2440x18mm 48"x96"x3/4"

1220x2800x18mm 48"x110"x3/4"

Base Material

MDF, Chipboard, Plywood

Thickness

8,9,12,15,16,17,18mm, etc.

Standard Formaldehyde Emission Classification

Normal, E1, CARB P2-TSCA EPA

Color

Solid Color, Diamond Design, Wood design, Marble design

Application

Commercial Furniture, Home Furniture
Kitchen Cabinets, Drawers, Decorative Board, etc.



Silk Touch



Long Durability



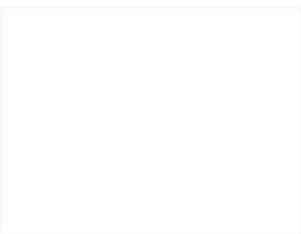
Color Stability



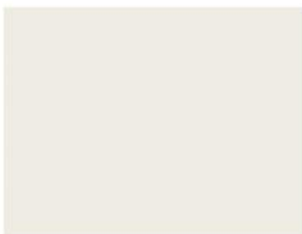
Eco-friendly

COLOR RANGE

2.1 SUPER MATT UV BOARD SOLID COLOR SERIES



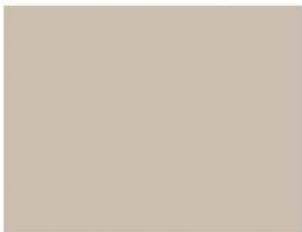
AM806SM **NEW**



AM814SM



AM1060SM



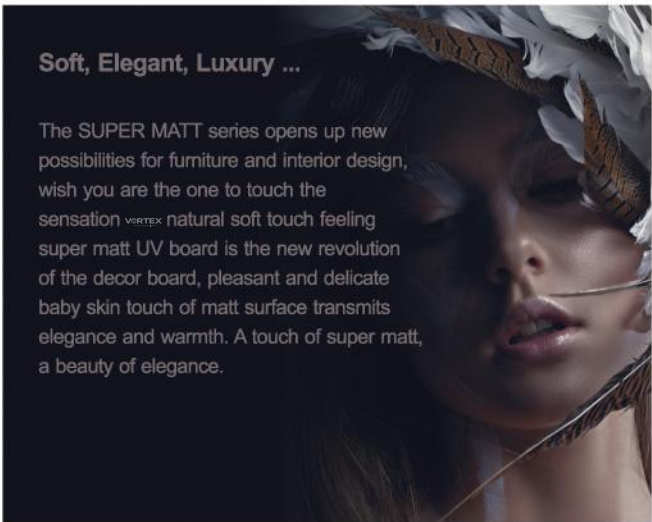
AM809SM **NEW**



AM820SM **NEW**



AM808SM **NEW**



AM832SM **NEW**



AM813SM



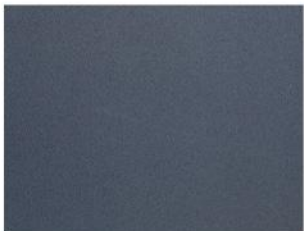
AM936SM



AM006SM **NEW**



AM1059SM



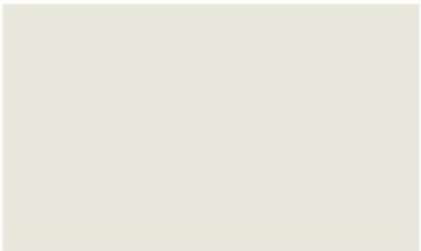
AM1061SM

COLOR RANGE

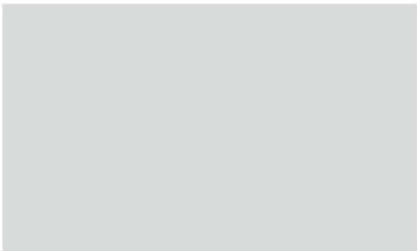
2.2 SUPER MATT PET MDF SERIES



AM1171SM



AM1141SM **NEW**



AM1140SM



AM1162SM



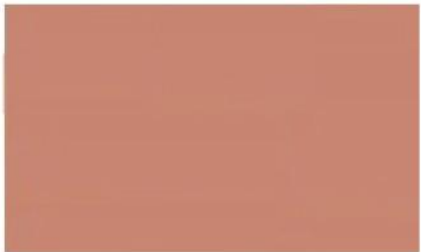
AM1145SM **NEW**



AM1169SM



AM1148SM



AM1186SM



AM1187SM



AM1189SM

COLOR RANGE

2.3 SUPER MATT UV BOARD MARBLE SERIES

VORTEX
PANEL SOLUTIONS



AM1142SM



AM1136SM



AM1093SM



AM1036SM

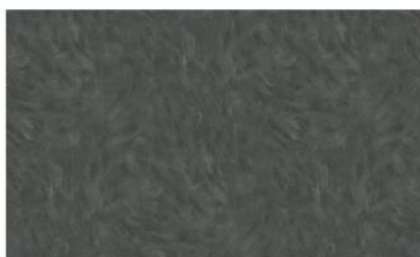


AM1087SM

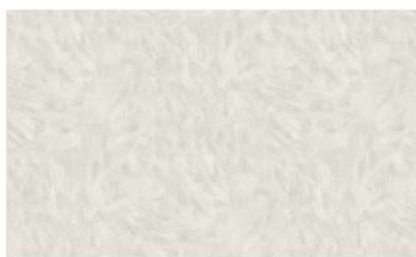


NEW

AM1107SM **NEW**



AM1082SM



AM1083SM **NEW**



COLOR RANGE

2.4 SUPER MATT UV BOARD MARBLE SERIES

VORTEX
PANEL SOLUTIONS



AM771SM



AM772SM



AM769SM



COLOR RANGE

2.5 SUPER MATT UV BOARD MARBLE SERIES

VORTEX
PANEL SOLUTIONS



AM775SM



AM781SM



AM776SM



AM338SM



AM1100SM





— HIGH END PET BOARD

SPECIFICATION

Surface

Imported PET Film

Standard Size

1220x2440x18mm 48"x96"x3/4"

1220x2800x18mm 48"x110"x3/4"

Finish

High Glossy Super Matt

Base Material

MDF, Chipboard

Thickness

MDF: 8-18mm, Chipboard: 18mm

PET Foil Thickness

0.35-0.5mm

Color

Mainly with Solid Color

Standard Formaldehyde Emission Classification

Normal, E1, CARB P2-TSCA EPA

Application

Commercial Furniture, Home Furniture
Kitchen Cabinets, Drawers, Decorative Board, etc.

Advantages:

1. Super eco-friendly, food grade, could be biodegradable
2. Never yellow change, no color fading
3. Colors are very gentle, super matt touching like the baby skin
4. Finger-printings free, anti-scratching, water-proof
5. Korea imported film, superior quality



High Scratch
Resistance



Long Durability



Antibacterial



Eco-friendly



Product introduction:

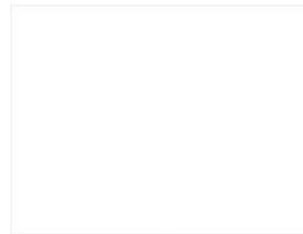
PET Laminated board is a high-quality board covered with matt or gloss PET film. It is the highest class material for furniture. We pick the world advanced Korea imported PET film and Jowat PUR glue, the best laminating technology, and same color PVC/ABS edge banding are available from the company, which are important to make this perfect product.

Third party certified to meet the requirements of EPA, TSCA, CARB Phase 2 & FSC certified. The color ranges are mainly solid plain colors, bringing you a feeling of concise and vogue style, elegant and graceful.

PET board will definitely become your best choice for home decor lifestyle.

COLOR RANGE

3.1 HIGH GLOSSY PET MDF SERIES



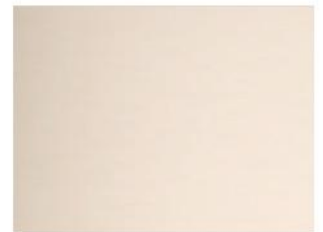
AM63004



AM63019



AM63002



AM63044



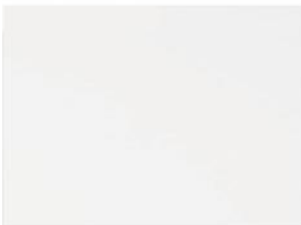
AM1139SM **NEW**



AM63074



AM1098SM **NEW**



AM63078



AM63033



AM63020



AM63023



AM63051



AM1106SM **NEW**



AM63062

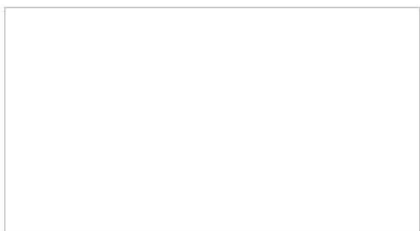


AM63049

COLOR RANGE

3.2 SUPER MATT PET MDF SERIES

VORTEX
PANEL SOLUTIONS



AM63035M



AM63003M



AM63032M



AM63809M



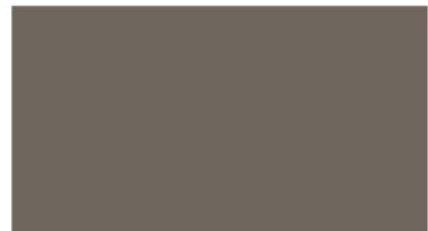
AM63810M



AM63102M



AM63020M



AM63039M



AM63070M



AM63074M

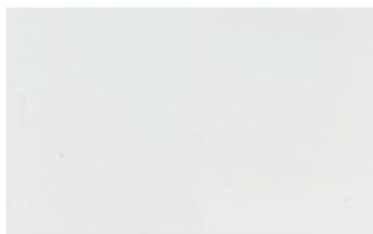


AM63023M

COLOR RANGE

3.3 SUPER MATT PET MDF SERIES

VORTEX
PANEL SOLUTIONS



AM63128M



AM63134M



AM63131M



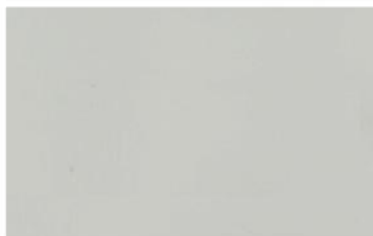
AM63126M



AM63127M



AM63132M



AM63130M



AM63129M



AM63135M



SERIES 4



SYNCHRONIZED BOARD SERIES

SPECIFICATION

Surface

Double Side 3D Texture Design

Standard Size

1220x2440x18mm 48"x96"x3/4"

1220x2800x18mm 48"x110"x3/4"

Base Material

MDF, Chipboard, Plywood, HMR MDF, MR Chipboard

Thickness

8,9,12,15,16,17,18mm, etc.

Color

Wood design, Marble design, Fabric, Metal,

Standard Formaldehyde Emission Classification

Normal, E1, CARB P2-TSCA EPA

Application

Commercial Furniture, Home Furniture
Kitchen Cabinets, Drawers, Decorative Board, etc.

FEATURE

1. Various popular designs from Europe
2. The decorated paper is 100% matched press plate
3. Vivid texture the feeling like real wood/stone
4. Same edge banding can be provided

COLOR RANGE

4.1 SYNCHRONIZED MDF WOODDGRAIN SERIES



AM9E47183-1



AM9E47183-2



AM9E47183



AM9E43179



AM9F25177Z-1



AM9E44180-1



AM9E48184



AM9E44180

COLOR RANGE

4.2 SYNCHRONIZED MDF WOODOODGRAIN SERIES



AM9E38170-1



AM9E38170-4



AM9E45181



AM9F25177Z-3



AM9F25177Z-4



AM9F25198Z



AM9F37169Z



AM9F25199Z



AM9F25196Z

COLOR RANGE

4.3 SYNCHRONIZED MDF WOODGRAIN SERIES



AM9E0926-5



AM9E00202-1



AM9F02004



AM9E0926-7



AM9E1128-3



AM9E2344



AM9F1330-1



AM9E1532-1



AM9E0926-9



AM9E1532-3



COLOR RANGE

4.4 WOODGRAIN SERIES



AM9F0314-9



AM9E0718-11N



AM9E0824-3



AM9E2654-10



AM9E2880Z-1



AM9E2880Z-3



AM9E2445-1



AM9E2445-2



AM8E1734-2



AM9E0617-14



AM9E1633-7



AM9E1633-9



COLOR RANGE

4.5 SYNCHRONIZED MDF SERIES

VORTEX
PANEL SOLUTIONS



AM9F32139Z-1



AM9F32139Z-5



AM9F31126Z-4



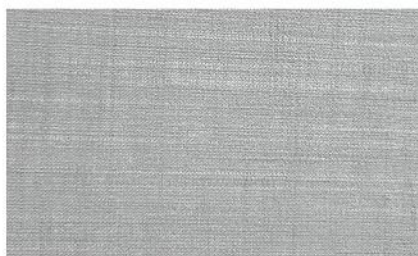
AM9F31126Z-3



AM9F32139Z



AM9F2149



AM9F3191Z SERIES



AM9F39148



AM9F2142



COLOR RANGE

4.6 SYNCHRONIZED MARBLE DESIGN MDF SERIES



AM9F0421



AM9F1837-1



AM9F1835



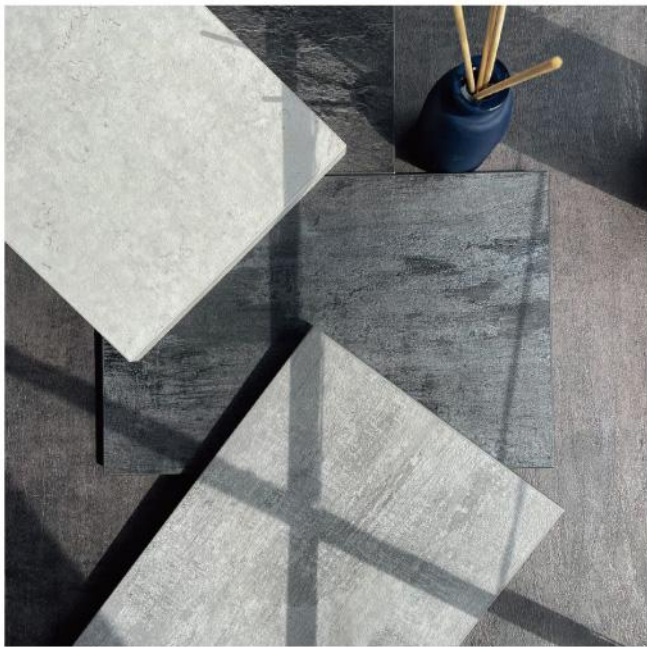
AM9F1964Z



AM9F1939-2Z



AM9F1939-1Z



COLOR RANGE

4.7 SYNCHRONIZED MDF MARBLE DESIGN SERIES



AM9F18131-5



AM10025M **NEW**



AM9F27118-2



AM9F27118



AM9F0421-1



AM9F19132Z





3D DEEP TEXTURE HIGH-END FURNITURE PANELS

SPECIFICATION

SURFACE: DOUBLE SIDE 3D TEXTURE DESIGN

BASE MATERIAL:

MDF, CHIPBOARD, HMR MDF, MR CHIPBOARD

THICKNESS AVAILABLE: 8, 9, 12, 15, 16, 18MM

STANDARD SIZE: 1220*2800 MM

COLOR AVAILABLE: WOODGRAIN, STONE, TEXTILE

FEATURE

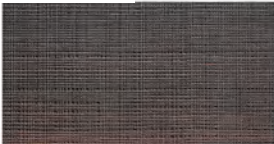
- 1.Unique design, Natural texture;
- 2.3D deep texture, vivid, attractive and fashionable;
3. Provide same edge banding with same texture and color;
4. Wildely used for cabinet, wardrobe, wall decoration etc.
5. Anti-scratch, easy to clean.
6. Acid and alkali resistance, stable color and durable .

COLOR RANGE

HIGH-END FURNITURE PANELS



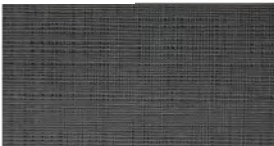
AM9DT0202



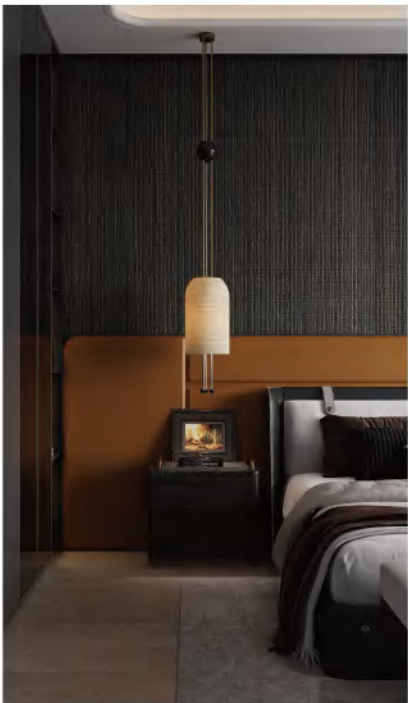
AM9DT0201



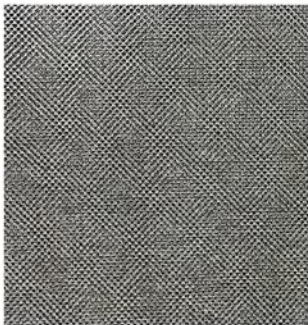
AM9DT0205



AM9DT0204



AM9DT0402



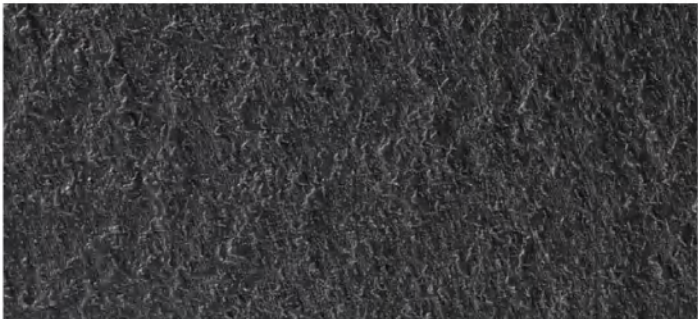
AM9DT0403



AM9DT0401



AM9DT0301



AM9DT0101



AM9DT0102



AM9DT0501

SERIES

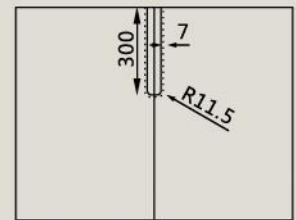
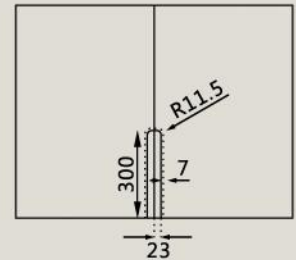
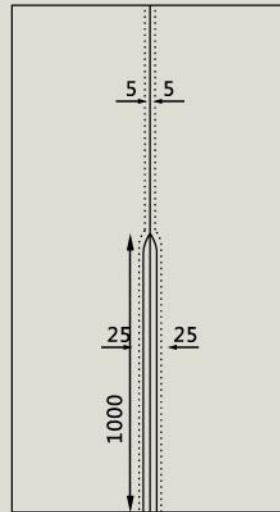
6

POWDER COATED MDF BOARD



ADVANTAGES:

- Handle free
- Flexible designs
- Custom shape
- Water proof
- Eco-friendly, No VOCs



SPECIFICATION

Surface

360° powder coated in matt surface

Base material

MDF

Board grade

Normal, E1, E0, Carb P2

Application

Commercial Furniture, Home Furniture
Kitchen Cabinets, Drawers, Decorative Board, etc.

Standard Size

Width:180-1220mm

Length:180-2800mm

Thickness

18mm, 22mm, 25mm, Customized

Color

Solid Color, Wood design color,



High Scratch
Resistance



Long Durability



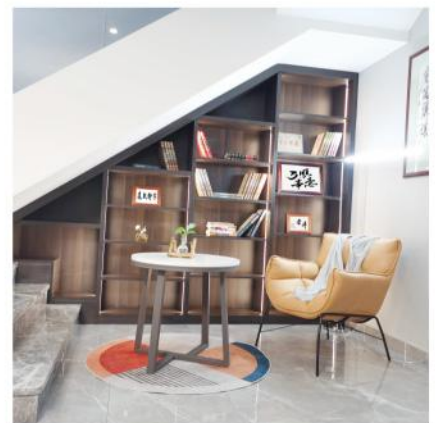
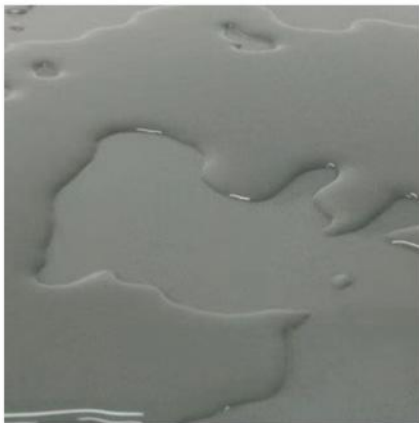
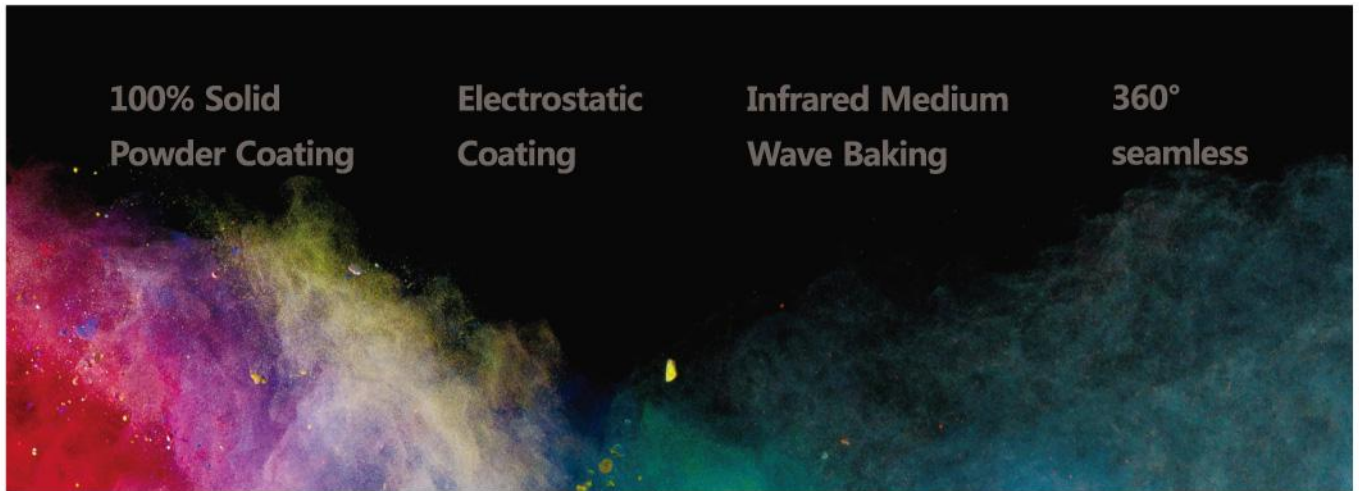
Design



Eco-friendly

APPLICATION

6.1 POWDER COATED MDF



COLOR RANGE

6.2 POWDER COATED MDF



80001-CLASSIC WHITE



80011-WARM WHITE



80003-DELUXE GREY



00021-BREEZE BEIGE



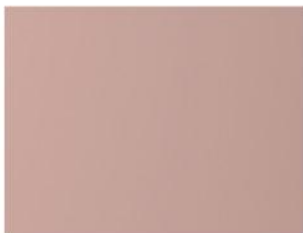
40004-FOREST GREEN



10012-CORAL RED



80020-CAPPUCCINO



10010-PINK DAISY



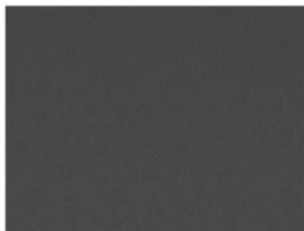
90005-STORM GREY



90009-CHES TNUT



60006-PEACOCK BLUE



90008-CHARCOAL GREY

HANDLE DESIGN

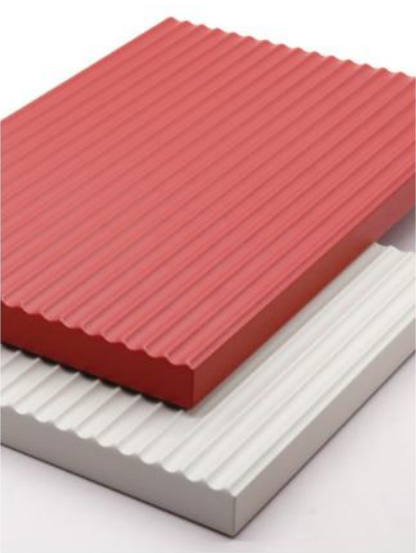
6.3 POWDER COATED MDF



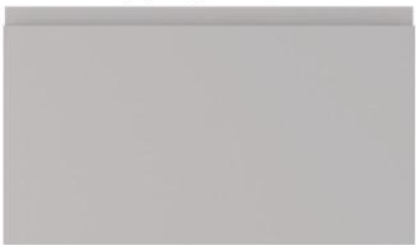
KLN-A I



KLN-A II



GRILLES



KLN-B



KLN-D



SERIES

7

EDGE BANDING



Material : PVC/ABS/3D Acrylic

Size : Thickness:0.4-3mm

Width:19-80mm

Color : 99% matched

Finish : High gloss/Matt/Super matt/
Diamond

Certificate : SGS Certificate

PRODUCTION LINE

VORTEX
PANEL SOLUTIONS



Extrusion lines



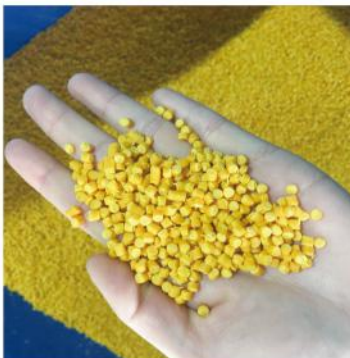
Prilling process



Color analysis



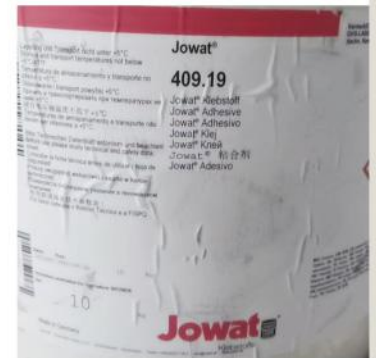
Sample Matched



Environmental material



Jumbo rolls



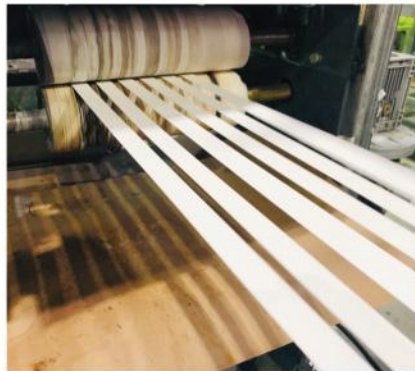
Germany jowat primer

PVC/3D ACRYLIC/ABS EDGE BANDING

VORTEX
PANEL SOLUTIONS



Printing Mould



Printing Line



Automatic Packaging



Automatic smart warehouse

SGS CERTIFICATE

Level For Anti-Yellow and Anti-Age (European Standard)



SGS

Test Report No. S29L1700010001 Date: Dec 11, 2017 Page 1 of 4

Equipment Information

Equipment	Model	Equipment No.	Calibration Date	Next Calibration Date
UV Accelerated Weathering Tester	QW 100	S29L1700010001	2017.05.11	2018.05.11
Color Analyser	CAM 2	S29L1700010001	2017.05.11	2018.05.11

Chinese Version Report No.: S29L1700010001

---End of Report---

SGS

Test Report No. S29L1700010001 Date: Dec 11, 2017 Page 1 of 4

THE FOLLOWING INFORMATION WAS SUBMITTED AND IDENTIFIED ON BEHALF OF THE CLIENT:

Sample Description: PVC EDGE BANDING

SGS Method: S29L1700010001

Test Method: Standard method as requested by applicant

Sample Receiving Date: Dec 11, 2017

Test Performing Date: Dec 11, 2017

Test Results: For further details, please refer to the following pages

Report for and on behalf of: [Signature]

SGS Data Approved Signature: [Signature]

SGS

Test Report No. S29L1700010001 Date: Dec 11, 2017 Page 2 of 4

Summary of Results

No.	Test Item	Test Method	Result	Pass/Fail	Conclusion
1	Light Aging Test (20°C)	ISO 4892-2:2013 Cycle 1 & 2	100% Pass	Pass	Pass

Note: Please refer the requirements.

Fail: Does not meet the requirements.

Not Applicable to the subject.

Original Sample Photo:

Sample 1

SGS

Test Report No. S29L1700010001 Date: Dec 11, 2017 Page 3 of 4

Test Item: Light Aging Test (20°C)

Sample Description: PVC EDGE BANDING

Test Method: ISO 4892-2:2013 Cycle 1 & 2

Test Condition: 20°C ± 2°C, 50% RH ± 5%

Equipment used: QW 100, CAM 2

Light source: D65 Illuminant

Wavelength: 380 nm - 700 nm

Exposure duration: 2000 h

Test Results:

Sample	Delta E
1	0.2

Note: According to ISO 4892-2:2013, the pass scale was determined under the 50% standard light.

Test Photo:

Original Sample Photo:

TEST FOR EDGE BANDING



Color fading test



Color fastness test



Strong adhesion

SERIES


8


PACKING & LOADING







 +212 661 764 069
+212 539 400 607

 Contact@artmood.ma

 ZONE INDUSTRIELLE GZENAYA
N 436 TANGER